



Mouse anti-Human CD45RO mAb, PE

Product Data Sheet

PRODUCT INFORMATION

Catalog#/Size : GMH0456P-025/25 Tests
GMH0456P-100/100 Tests

Clone: GM4CD45

Isotype: Mouse IgG2a

Reactivity: Human

Formulation: Phosphate-buffered solution, pH 7.4, containing 0.09% sodium azide and 0.1% (w/v)

Storage: Store at 4°C. DO NOT FREEZE. LIGHT SENSITIVE

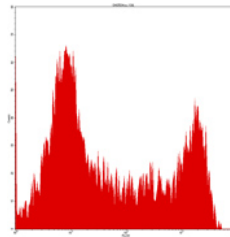
DESCRIPTION

GM4CD45 reacts with an isoform of CD45, a 180 kDa molecule clustered as CD45RO. CD45RO is expressed on memory/activated T cells and cortical thymocytes in comparison with CD45RA, which is expressed on naive/resting T cells and on medullary thymocytes. CD45RO and CD45RA molecules are important to discriminate naive and memory T cells in the study of the immune system.

APPLICATION AND USAGE

Applications: FC

Recommended Usage: Each lot of this antibody is quality control tested by immunofluorescent staining with flow cytometric analysis. For immunofluorescent staining, the suggested use of this reagent is 10 µl per million cells or 10 µl per 100 µl of whole blood. It is recommended that the reagent be titrated for optimal performance for each application.



Normal human peripheral blood lymphocytes analyzed with PE CD45RO (GM4CD45) mAb.

RELATED PRODUCTS

Catalog#	Product Name	Applications
GMH0456F	Mouse anti-Human CD45RO, FITC	FC
GMH0456C	Mouse anti-Human CD45RO, PE-Cy5	FC
GMH0456Z	Mouse anti-Human CD45RO, Purified	FC
GMK902P	Mouse IgG2a Isotype control, PE	FC

REFERENCE

- Knapp, W *et al.* (1989) *Leukocyte Typing IV: White Cell Differentiation Antigens*, Oxford University Press, New York.
- Trowbridge, IS and Thomas, ML. (1993) *Annu. Rev. Immunol.* **12**: 85.
- Pulido, R *et al.* (1988) *J. Immunol.* **140**:3851.
- Smith, SH *et al.* (1986) *Immunology* **58**:63.