



Mouse anti-Human CD29 mAb, Purified

Product Data Sheet

PRODUCT INFORMATION

Catalog#/Size : GMH0291Z-025/25 ug
GMH0291Z-100/100 ug

Clone: GMCD29

Isotype: Mouse IgG1

Reactivity: Human

Formulation: Phosphate-buffered solution,
pH 7.4, containing 0.09%
sodium azide

Storage: 4°C for short storage and -20°C
for long period.

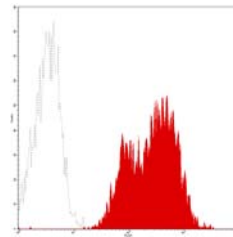
DESCRIPTION

GMCD29 reacts with 130 kDa integrin $\beta 1$, which has a broad tissue distribution. It is expressed on lymphocytes, monocytes and weakly on granulocytes, but not on erythrocytes. On T cells, CD29 is more highly expressed on memory cells than naive cells. Integrin chain β associated with integrin α subunits 1-6 (CD49a-f) to form CD49/CD29 heterodimers that are involved in cell-cell and cell-matrix adhesion. It has been reported that CD29 is a critical molecule for embryogenesis and development. It is also essential to the differentiation of hematopoietic stem cells and associates with tumor progression and metastasis.

APPLICATION AND USAGE

Applications: FC, IF, IHC

Recommended Usage: Each lot of this antibody is quality control tested by immunofluorescent staining with flow cytometric analysis. It is recommended that the antibody be titrated for optimal performance in the assay of interest.



Normal human peripheral blood lymphocytes analyzed with PE CD29 (GMCD29) mAb.

RELATED PRODUCTS

Catalog#	Product Name	Applications
GMH0291F	Mouse anti-Human CD29, FITC	FC
GMH0291P	Mouse anti-Human CD29, PE	FC
GMK901Z	Mouse IgG1 Isotype control, Purified	FC

REFERENCE

1. Kishimoto, T. *et al.* (1998). *Leucocyte Typing VI: White Cell Differentiation Antigens*. Garland Publishing, Inc. London.
2. Hemler ME. (1990) *Ann. Rev. Immunol* **8**:365
3. Hynes RO (1992) *Cell* **69**: 11