



Mouse anti-Human CD29 mAb, PE

Product Data Sheet

PRODUCT INFORMATION

Catalog#/Size : GMH0291P-025/25 Tests
GMH0291P-100/100 Tests

Clone: GMCD29

Isotype: M μ IgG1

Reactivity: Human

Formulation: Phosphate-buffered solution, pH 7.4, containing 0.09% sodium azide and 0.1% (w/v)

Storage: Store at 4°C. DO NOT FREEZE. LIGHT SENSITIVE

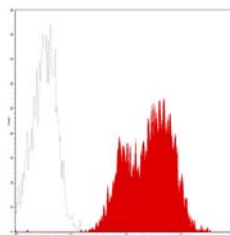
DESCRIPTION

GMCD29 reacts with 130 kDa integrin β 1, which has a broad tissue distribution. It is expressed on lymphocytes, monocytes and weakly on granulocytes, but not on erythrocytes. On T cells, CD29 is more highly expressed on memory cells than naive cells. Integrin chain β associated with integrin α subunits 1-6 (CD49a-f) to form CD49/CD29 heterodimers that are involved in cell-cell and cell-matrix adhesion. It has been reported that CD29 is a critical molecule for embryogenesis and development. It is also essential to the differentiation of hematopoietic stem cells and associates with tumor progression and metastasis.

APPLICATION AND USAGE

Applications: FC, IF

Recommended Usage: Each lot of this antibody is quality control tested by immunofluorescent staining with flow cytometric analysis. For immunofluorescent staining, the suggested use of this reagent is 10 μ l per million cells or 10 μ l per 100 μ l of whole blood. It is recommended that the reagent be titrated for optimal performance for each application.



Normal human peripheral blood lymphocytes analyzed with PE CD29 (GMCD29) mAb.

RELATED PRODUCTS

Catalog#	Product Name	Applications
GMH0291Z	Mouse anti-Human CD29,Purified	FC
GMH0291F	Mouse anti-Human CD29, FITC	FC
GMK901P	Mouse IgG1 Isotype control, PE	FC

REFERENCE

1. Kishimoto, T . *et al.* (1998). *Leucocyte Typing VI: White Cell Differentiation Antigens*. Garland Publishing, Inc. London.
2. Hemler ME. (1990) *Ann. Rev. Immunol* **8**:365
- 3 Hynes RO (1992) *Cell* **69**: 11