



Mouse anti-Human CD25 mAb, Purified

Product Data Sheet

PRODUCT INFORMATION

Catalog#/Size : GMH0251Z-025/25 ug
GMH0251Z-100/100 ug

Clone: GM1CD25

Isotype: Mouse IgG1

Reactivity: Human

Formulation: Phosphate-buffered solution, pH 7.4, containing 0.09% sodium azide and 0.1% (w/v)

Storage: 4°C for short storage and -20°C for long period.

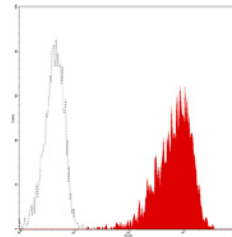
DESCRIPTION

GM1CD25 reacts with CD25 antigen, α chain of low-affinity interleukin-2 receptor (IL-2R α), which is expressed on activated cells including T, B, NK cells and monocytes. The antigen is also present on subset of thymocytes, HTLV-1 transformed T cell lines, EBV transformed B cells, myeloid precursors and oligodendrocytes. The high affinity IL-2 receptor is formed by the noncovalent association of α (55 kDa, CD25), β (75 kDa, CD122), and γ subunit (70 kDa, CD132). The interaction of IL-2 with IL-2R induces the activation and proliferation of T, B, NK cells and macrophages. CD4+/CD25+ cells might directly regulate the function of responsive T cells.

APPLICATION AND USAGE

Applications: FC, IF, IHC

Recommended Usage: Each lot of this antibody is quality control tested by immunofluorescent staining with flow cytometric analysis. It is recommended that the antibody be titrated for optimal performance in the assay of interest.



PHA-3d peripheral blood lymphocytes analyzed with PE CD25 (GM1CD25) mAb.

RELATED PRODUCTS

Catalog#	Product Name	Applications
GMH0251F	Mouse anti-Human CD25, FITC	FC
GMH0251P	Mouse anti-Human CD25, PE	FC
GMH0251C	Mouse anti-Human CD25, PE-Cy5	FC
GMK901Z	Mouse IgG1 Isotype control, purified	FC

REFERENCE

1. Kishimoto, T . *et al.* (1998). *Leucocyte Typing VI: White Cell Differentiation Antigens*. Garland Publishing, Inc. London.
2. Robb RJ. *et al.* (1984). *J. Exp. Med* **160**:1126
3. Greene WC and Leonard WJ *et al.* (1986). *Annu. Rev. Immunol.* **4**:69.
4. Ng WF *et al.* (2001). *Leukemia* **98**: 2736