



Mouse anti-Human CD19 mAb, FITC

Product Data Sheet

PRODUCT INFORMATION

Catalog#/Size : GMH019F-025/ 25 Tests
GMH019F-100/100 Tests

Clone: CB19

Isotype: Mouse IgG1

Reactivity: Human

Formulation: Phosphate-buffered solution, pH 7.4, containing 0.09% sodium azide and 0.1% (w/v)

Storage: Store at 4°C. DO NOT FREEZE. LIGHT SENSITIVE

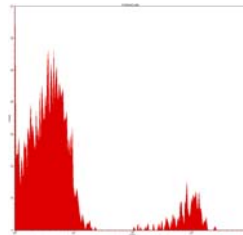
DESCRIPTION

CB19 monoclonal antibody reacts with CD19 (B4), a 90 kDa molecule, which is expressed on approximately 5-25% of human peripheral blood lymphocytes. CD19 antigen is present on human B lymphocytes at most stages of maturation, from the earliest Ig gene rearrangement in pro-B cells to mature cell, as well as malignant B cells, but is lost on maturation to plasma cells. CD19 antibody does not react with T lymphocytes, monocytes and granulocytes. CD19 is a critical signal transduction molecule that regulates B lymphocyte development, activation and differentiation.

APPLICATION AND USAGE

Applications: FC, IF

Recommended Usage: Each lot of this antibody is quality control tested by immunofluorescent staining with flow cytometric analysis. For immunofluorescent staining, the suggested use of this reagent is 10 µl per million cells or 10 µl per 100 µl of whole blood. It is recommended that the reagent be titrated for optimal performance for each application.



Normal human peripheral blood lymphocytes analyzed with FITC CD19 (CB19) mAb.

RELATED PRODUCTS

Catalog#	Product Name	Applications
GMH019Z	Mouse anti-Human CD19, purified	FC
GMH019P	Mouse anti-Human CD19, PE	FC
GMH019C	Mouse anti-Human CD19, PE-Cy5	FC
GMH019B	Mouse anti-Human CD19, Biotin	FC
GMK901F	Mouse IgG1 Isotype control, FITC	FC

REFERENCE

- Nadler, LM et al. (1983) J. Immunol. **131**:244
- Schlossman, SL et al., eds. (1995) *Leucocyte Typing V: White Cell Differentiation Antigens*, Oxford University Press, New York.
- Tedder T et al. (1994) Immunol Today. **15**:437-442