



# Mouse anti-Human CD16 mAb, Purified

## Product Data Sheet

### PRODUCT INFORMATION

**Catalog#/Size :** GMH016Z-025/25 ug  
GMH016Z-100/100 ug

**Clone:** CB16

**Isotype:** Mouse IgG1

**Reactivity:** Human

**Formulation:** Phosphate-buffered solution,  
pH 7.4, containing 0.09%  
sodium azide.

**Storage:** 4°C for short storage and -20°C  
for long period.

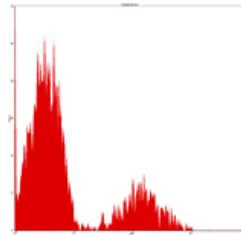
### DESCRIPTION

CB16 reacts with human CD16, a 50-65 kDa Fc $\gamma$  receptor IIIa (Fc $\gamma$ RIII), expressed on NK cells, monocytes/macrophages and granulocytes. It is a human NK cell associated antigen. CD16 is a low affinity receptor for IgG which functions in phagocytosis and ADCC, as well as in signal transduction and NK cell activation. The CD16 antibody blocks the binding of soluble immune complexes to granulocytes.

### APPLICATION AND USAGE

**Applications:** FC, IF, IHC

**Recommended Usage:** Each lot of this antibody is quality control tested by immunofluorescent staining with flow cytometric analysis. It is recommended that the antibody be titrated for optimal performance in the assay of interest.



Normal human peripheral blood lymphocytes analyzed with PE CD16 (CB16) mAb.

### RELATED PRODUCTS

Catalog#	Product Name	Applications
GMH016P	Mouse anti-Human CD16, PE	FC
GMH016A	Mouse anti-Human CD16, APC	FC
GMH016F	Mouse anti-Human CD16, FITC	FC
GMK901Z	Mouse IgG1 Isotype control, Purified	FC

### REFERENCE

1. Knapp, W., et al. (1989) *Leucocyte Typing IV : White Cell Differentiation Antigens*, Oxford University Press, New York.
2. Stroncek, D.F., et al. (1991) *Blood* **77**:1572.
3. Wirthmueller, U., et al. (1992) *J. Exp. Med.* **175**:1381.
4. Barclay, N.A., et al. (1993) *The Leucocyte Antigen FactBook, CD16 section*, Academic Press Inc., San Diego, California, p. 136