



Mouse anti-Human CD15 mAb, PE

Product Data Sheet

PRODUCT INFORMATION

Catalog#/Size : GMH0151P-025/25 Tests
GMH0151P-100/100 Tests

Clone: GM1CD15

Isotype: Mouse IgM

Reactivity: Human

Formulation: Phosphate-buffered solution, pH 7.4, containing 0.09% sodium azide and 0.1% (w/v)

Storage: Store at 4°C. DO NOT FREEZE. LIGHT SENSITIVE

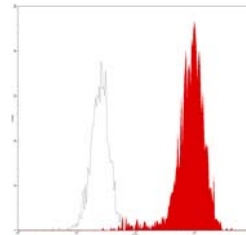
DESCRIPTION

GM1CD15 reacts with CD15 (3-FAL), a 220 kDa carbohydrate structure, also called X-hapten. CD15 is expressed on >95% of granulocytes including neutrophils and eosinophils and to a varying degree on monocytes, but not on lymphocytes or basophils. CD15 antigen is important for direct carbohydrate-carbohydrate interaction and plays a role in mediating phagocytosis, bactericidal activity and chemotaxis. CD15 is a phenotyping marker of leukemia.

APPLICATION AND USAGE

Applications: FC

Recommended Usage: Each lot of this antibody is quality control tested by immunofluorescent staining with flow cytometric analysis. For immunofluorescent staining, the suggested use of this reagent is 10 µl per million cells or 10 µl per 100 µl of whole blood. It is recommended that the reagent be titrated for optimal performance for each application.



Normal human peripheral blood granulocytes analyzed with PE CD15 (GM1CD15) mAb.

RELATED PRODUCTS

Catalog#	Product Name	Applications
GMH0151F	Mouse anti-Human CD15, FITC	FC
GMH0151Z	Mouse anti-Human CD15, Purified	FC
GMK904P	Mouse IgM Isotype control, PE	FC

REFERENCE

- McMichael, AJ. *et al.*, eds. (1987) *Leucocyte Typing III: White Cell Differentiation Antigen*, Oxford University Press, New York.
- Jyaram Y, Hogg N. *et al.*, eds. (1989) *Leucocyte Typing IV: White Cell Differentiation Antigen*. Oxford University Press, New York. 796-797.
- Wright, SD. *et al.* (1990) *Science* **249**:1434