



Mouse anti-Human CD14 mAb, Purified

Product Data Sheet

PRODUCT INFORMATION

Catalog#/Size : GMH0142Z-025/25 ug
GMH0142Z-100/100 ug

Clone: GM2CD14

Isotype: Mouse IgG1

Reactivity: Human

Formulation: Phosphate-buffered solution, pH 7.4, containing 0.09% sodium azide.

Storage: 4°C for short storage and -20°C for long period.

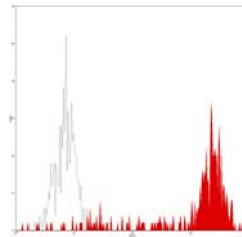
DESCRIPTION

GM2CD14 reacts with CD14, a 53-55 kDa molecule. CD14 is a human high affinity cell-surface receptor for complexes of lipopolysaccharide (LPS-endotoxin) and serum LPS-binding protein (LPB). CD14 antigen has a strong presence on the surface of monocytes/macrophages, is weakly expressed on granulocytes, but not expressed by myeloid progenitor cells. CD14 functions as a receptor for endotoxin; when the monocytes become activated they release cytokines such as TNF, and up-regulate cell surface molecules including adhesion molecules.

APPLICATION AND USAGE

Applications: FC, IF, IHC

Recommended Usage: Each lot of this antibody is quality control tested by immunofluorescent staining with flow cytometric analysis. It is recommended that the antibody be titrated for optimal performance in the assay of interest.



Normal human peripheral blood monocytes analyzed with PE CD14 (GM2CD14) mAb.

RELATED PRODUCTS

Catalog#	Product Name	Applications
GMH0142P	Mouse anti-Human CD14, PE	FC
GMH0142C	Mouse anti-Human CD14, PE-Cy5	FC
GMH0142A	Mouse anti-Human CD14, APC	FC
GMH0142F	Mouse anti-Human CD14, FITC	FC
GMK901Z	Mouse IgG1 Isotype control, Purified	FC

REFERENCE

- McMichael, AJ. *et al., eds.* (1987) *Leucocyte Typing III: White Cell Differentiation Antigen*, Oxford University Press, New York.
- Jyaram Y, Hogg N. *et al., eds.* (1989) *Leucocyte Typing IV: White Cell Differentiation Antigen*. Oxford University Press, New York. 796-797.
- Wright, SD. *et al.* (1990) *Science* **249**:1434