



# Mouse anti-Human CD13 mAb, FITC

## Product Data Sheet

### PRODUCT INFORMATION

**Catalog#/Size :** GMH013F-025/25 Tests  
GMH013F-100/100 Tests

**Clone:** B-F10

**Isotype:** Mouse IgG1

**Reactivity:** Human

**Formulation:** Phosphate-buffered solution, pH 7.4, containing 0.09% sodium azide and 0.1% (w/v)

**Storage:** Store at 4°C. DO NOT FREEZE. LIGHT SENSITIVE

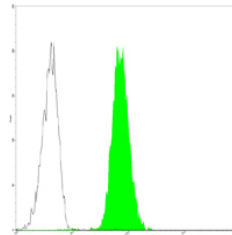
### DESCRIPTION

B-F10 reacts with CD13, 150 kDa aminopeptidase N (APN). CD13 is expressed on the surface of early committed progenitors and mature granulocytes and monocytes (GM-CFU), but not on lymphocytes, platelets or erythrocytes. It is also expressed on endothelial cells, epithelial cells, bone marrow stroma cells, and osteoclasts, as well as a small proportion of LGL lymphocytes. CD13 acts as a receptor for specific strains of RNA viruses and plays an important function in the interaction between human cytomegalovirus (CMV) and its target cells.

### APPLICATION AND USAGE

**Applications:** FC

**Recommended Usage:** Each lot of this antibody is quality control tested by immunofluorescent staining with flow cytometric analysis. For immunofluorescent staining, the suggested use of this reagent is 10 µl per million cells or 10 µl per 100 µl of whole blood. It is recommended that the reagent be titrated for optimal performance for each application.



Normal human peripheral blood granulocytes analyzed with FITC CD13 (B-F10) mAb.

### RELATED PRODUCTS

Catalog#	Product Name	Applications
GMH013Z	Mouse anti-Human CD13, Purified	FC
GMH013P	Mouse anti-Human CD13, PE	FC
GMK901F	Mouse IgG1 Isotype control, FITC	FC

### REFERENCE

1. Look AT *et al.* (1989) *J. Clin. Invest.* **83**:1299-1307.
2. Favaloro, E *et al.* (1990) *Brit. J. Haematol.* **74**:385.
3. Barclay, N *et al.* (1993) *The leucocyte Antigen Factsbook, CD13 section*, Academic Press Inc. San Diego, CA.
4. Riemann D *et al.* (1997) *J. Immunol.* **158**:3425-32.