



# Mouse anti-Human CD11a mAb, Purified

## Product Data Sheet

### PRODUCT INFORMATION

**Catalog#/Size :** GMH011Z-025/25 ug  
GMH011Z-100/100 ug

**Clone:** TS1/22.1.1.13

**Isotype:** Mouse IgG1

**Reactivity:** Human

**Formulation:** Phosphate-buffered solution,  
pH 7.4, containing 0.09%  
sodium azide.

**Storage:** 4°C for short storage and -20°C  
for long period.

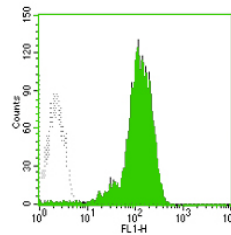
### DESCRIPTION

TS1/22.1.1.13 reacts with CD11a, a 180 kDa molecule. CD11a is the  $\alpha$  chain of the leukocyte function associated antigen-1 (LFA-1 $\alpha$ ), and is expressed on all leukocytes including T and B cells, monocytes, and granulocytes, but is absent on non-hematopoietic tissue and human platelets. CD11/CD18 (LFA-1), a member of the integrin subfamily, is a leukocyte adhesion receptor that is essential for cell-to-cell contact, such as lymphocyte adhesion, NK and T-cell cytotoxicity, and T-cell proliferation. CD11/CD18 is also involved in the interaction of leukocytes with endothelium. CD11a antibody has been used to reduce graft failure for bone marrow grafts in immunodeficient children.

### APPLICATION AND USAGE

**Applications:** FC, IF, IHC

**Recommended Usage:** Each lot of this antibody is quality control tested by immunofluorescent staining with flow cytometric analysis. It is recommended that the antibody be titrated for optimal performance in the assay of interest.



Normal human peripheral blood lymphocytes analyzed with FITC CD11a mAb.

### RELATED PRODUCTS

Catalog#	Product Name	Applications
GMH011F	Mouse anti-Human CD11a, FITC	FC
GMH011P	Mouse anti-Human CD11a, PE	FC
GMK901Z	Mouse IgG1 Isotype control, Purified	FC

### REFERENCE

- Schlossman. S *et al.* (1995) *Leucocyte Typing V: White Cell Differentiation Antigens*. Oxford University Press. New York.
- Lub M *et al.* (1995) *Immunol. Today* **16**:479.
- Sanchez-Mateos P *et al.* (1996) *Cancer Biol.* **7**:99.