



Mouse anti-Human CD11a mAb, PE

Product Data Sheet

PRODUCT INFORMATION

Catalog#/Size : GMH011P-025/25 Tests
GMH011P-100/100 Tests

Clone: TS1/22.1.1.13

Isotype: Mouse IgG1

Reactivity: Human

Formulation: Phosphate-buffered solution, pH 7.4, containing 0.09% sodium azide and 0.1% (w/v)

Storage: Store at 4°C. DO NOT FREEZE. LIGHT SENSITIVE

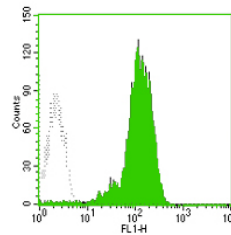
DESCRIPTION

TS1/22.1.1.13 reacts with CD11a, a 180 kDa molecule. CD11a is the α chain of the leukocyte function associated antigen-1 (LFA-1 α), and is expressed on all leukocytes including T and B cells, monocytes, and granulocytes, but is absent on non-hematopoietic tissue and human platelets. CD11/CD18 (LFA-1), a member of the integrin subfamily, is a leukocyte adhesion receptor that is essential for cell-to-cell contact, such as lymphocyte adhesion, NK and T-cell cytotoxicity, and T-cell proliferation. CD11/CD18 is also involved in the interaction of leukocytes with endothelium. CD11a antibody has been used to reduce graft failure for bone marrow grafts in immunodeficient children.

APPLICATION AND USAGE

Applications: FC

Recommended Usage: Each lot of this antibody is quality control tested by immunofluorescent staining with flow cytometric analysis. For immunofluorescent staining, the suggested use of this reagent is 10 μ l per million cells or 10 μ l per 100 μ l of whole blood. It is recommended that the reagent be titrated for optimal performance for each application.



Normal human peripheral blood lymphocytes analyzed with FITC CD11a mAb.

RELATED PRODUCTS

Catalog#	Product Name	Applications
GMH011F	Mouse anti-Human CD11a, FITC	FC
GMH011Z	Mouse anti-Human CD11a, Purified	FC
GMK901P	Mouse IgG1 Isotype control, PE	FC

REFERENCE

- Schlossman. S *et al.* (1995) *Leucocyte Typing V: White Cell Differentiation Antigens*. Oxford University Press. New York.
- Lub M *et al.* (1995) *Immunol. Today* **16**:479.
- Sanchez-Mateos P *et al.* (1996) *Cancer Biol.* **7**:99.