



Mouse anti-Human CD11b mAb, Purified

Product Data Sheet

PRODUCT INFORMATION

Catalog#/Size : GMH0115Z-025/25 ug
GMH0115Z-100/100 ug

Clone: GM2CD11

Isotype: Mouse IgG1

Reactivity: Human

Formulation: Phosphate-buffered solution, pH 7.4, containing 0.09% sodium azide.

Storage: 4°C for short storage and -20°C for long period.

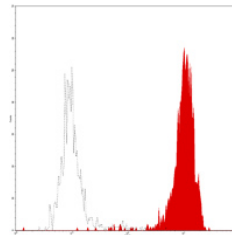
DESCRIPTION

GM2CD11 reacts with CD11b, a member of the integrin α chain family with 165 kDa MW. which is expressed on NK cell, monocytes, granulocytes and subsets of T and B cells. It associates with CD18 to form CD11b/CD18 complex. The cellular functions of CD11b are on neutrophil and monocyte interactions with stimulated endothelium; phagocytosis of iC3b or IgG coated particles as a receptor; chemotaxis and apoptosis. CD11b is absent in Leukocyte Adhesion Deficiency (LAD-1) patients who have major problems with bacterial infections.

APPLICATION AND USAGE

Applications: FC, IF, IHC

Recommended Usage: Each lot of this antibody is quality control tested by immunofluorescent staining with flow cytometric analysis. It is recommended that the antibody be titrated for optimal performance in the assay of interest.



Normal human peripheral blood granulocytes analyzed with PE CD11b (GM2CD11) mAb.

RELATED PRODUCTS

Catalog#	Product Name	Applications
GMH0115P	Mouse anti-Human CD11b, PE	FC
GMK901Z	Mouse IgG1 Isotype control, Purified	FC

REFERENCE

- Ling NR *et al.*, eds. (1987) *Leucocyte Typing III : White Cell Differentiation Antigens*, Oxford University Press, New York. 303-334
- Petty HR nd Todd RF. (1996) *Immunol. Today* 17:209
- Springer TA (1994) *Cell* 76:301
- Stewart M *et al* (1995) *Curr Opin Cell Biol* 7:690