



Mouse anti-Human CD11b mAb, PE

Product Data Sheet

PRODUCT INFORMATION

Catalog#/Size : GMH0115P-025/25 Tests
GMH0115P-100/100 Tests

Clone: GM2CD11

Isotype: Mouse IgG1

Reactivity: Human

Formulation: Phosphate-buffered solution, pH 7.4, containing 0.09% sodium azide and 0.1% (w/v)

Storage: Store at 4°C. DO NOT FREEZE. LIGHT SENSITIVE

DESCRIPTION

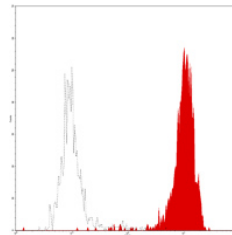
GM2CD11 reacts with CD11b, a member of the integrin α chain family with 165 kDa MW. which is expressed on NK cell, monocytes, granulocytes and subsets of T and B cells. It associates with CD18 to form CD11b/CD18 complex. The cellular functions of CD11b are on neutrophil and monocyte interactions with stimulated endothelium; phagocytosis of iC3b or IgG coated particles as a receptor; chemotaxis and apoptosis.

CD11b is absent in Leukocyte Adhesion Deficiency (LAD-1) patients who have major problems with bacterial infections.

APPLICATION AND USAGE

Applications: FC

Recommended Usage: Each lot of this antibody is quality control tested by immunofluorescent staining with flow cytometric analysis. For immunofluorescent staining, the suggested use of this reagent is 10 μ l per million cells or 10 μ l per 100 μ l of whole blood. It is recommended that the reagent be titrated for optimal performance for each application.



Normal human peripheral blood granulocytes analyzed with PE CD11b (GM2CD11) mAb.

RELATED PRODUCTS

Catalog#	Product Name	Applications
GMH0115Z	Mouse anti-Human CD11b, Purified	FC
GMK901P	Mouse IgG1 Isotype control, PE	FC

REFERENCE

1. Ling NR *et al.*, eds. (1987) *Leucocyte Typing III : White Cell Differentiation Antigens*, Oxford University Press, New York. 303-334
2. Petty HR nd Todd RF. (1996) *Immunol. Today* 17:209
3. Springer TA (1994) *Cell* 76:301
4. Stewart M *et al* (1995) *Curr Opin Cell Biol* 7:690