



Mouse anti-Human CD10 mAb, Purified

Product Data Sheet

PRODUCT INFORMATION

Catalog#/Size : GMH010Z-025/25 ug
GMH010Z-100/100 ug

Clone: CB-CALLA

Isotype: Mouse IgG1

Reactivity: Human

Formulation: Phosphate-buffered solution, pH 7.4, containing 0.09% sodium azide.

Storage: 4°C for short storage and -20°C for long period.

DESCRIPTION

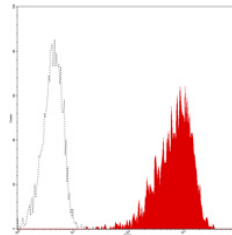
CB-CALLA reacts with CD10, 100 kDa common acute lymphoblastic leukemia antigen (CALLA), which is expressed on lymphoid precursors, germinal center B cells, and peripheral blood granulocytes. CD10 is a regulator of B cell growth and proliferation. CD10 antibody is used in conjunction with other reagents in the phenotyping of leukemia.

CD10 is a phenotyping marker of leukemic cells that may have prognostic significance in leukemia clinical application.

APPLICATION AND USAGE

Applications: FC, IF, IHC

Recommended Usage: Each lot of this antibody is quality control tested by immunofluorescent staining with flow cytometric analysis. It is recommended that the antibody be titrated for optimal performance in the assay of interest.



Normal human peripheral blood granulocytes analyzed with PE CD10 (CB-CALLA) mAb.

RELATED PRODUCTS

Catalog#	Product Name	Applications
GMH010F	Mouse anti-Human CD10, FITC	FC
GMH010P	Mouse anti-Human CD10, PE	FC
GMK901Z	Mouse IgG1 Isotype control, Purified	FC

REFERENCE

- McMichael, AJ. Ceds. (1987) Leucocyte Typing III: White Cell Differentiation Antigen, Oxford University Press, New York.
- Letarte, M. *et al.*, (1988) *J. Exp. Med.* **168**:1247.
- Le Bien TW and McCormack, RT. (1989) *Blood* **73**:625-635.
- Consolini R *et al.* (1998) *Hematologica* **83**:967-973