



# Mouse anti-Human CD10 mAb, PE

## Product Data Sheet

### PRODUCT INFORMATION

**Catalog#/Size :** GMH010P-025/25 Tests  
GMH010P-100/100 Tests

**Clone:** CB-CALLA

**Isotype:** Mouse IgG1

**Reactivity:** Human

**Formulation:** Phosphate-buffered solution, pH 7.4, containing 0.09% sodium azide and 0.1% (w/v)

**Storage:** Store at 4°C. DO NOT FREEZE. LIGHT SENSITIVE

### DESCRIPTION

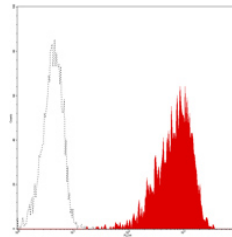
CB-CALLA reacts with CD10, 100 kDa common acute lymphoblastic leukemia antigen (CALLA), which is expressed on lymphoid precursors, germinal center B cells, and peripheral blood granulocytes. CD10 is a regulator of B cell growth and proliferation. CD10 antibody is used in conjunction with other reagents in the phenotyping of leukemia.

CD10 is a phenotyping marker of leukemic cells that may have prognostic significance in leukemia clinical application.

### APPLICATION AND USAGE

**Applications:** FC

**Recommended Usage:** Each lot of this antibody is quality control tested by immunofluorescent staining with flow cytometric analysis. For immunofluorescent staining, the suggested use of this reagent is 10 µl per million cells or 10 µl per 100 µl of whole blood. It is recommended that the reagent be titrated for optimal performance for each application.



Normal human peripheral blood granulocytes analyzed with PE CD10 (CB-CALLA) mAb.

### RELATED PRODUCTS

Catalog#	Product Name	Applications
GMH010F	Mouse anti-Human CD10, FITC	FC
GMH010Z	Mouse anti-Human CD10, Purified	FC
GMK901P	Mouse IgG1 Isotype control, PE	FC

### REFERENCE

- McMichael, AJ. Ceds. (1987) Leucocyte Typing III: White Cell Differentiation Antigen, Oxford University Press, New York.
- Letarte, M. *et al.*, (1988) *J. Exp. Med.* **168**:1247.
- Le Bien TW and McCormack, RT. (1989) *Blood* **73**:625-635.
- Consolini R *et al.* (1998) *Hematologica* **83**:967-973