



Mouse anti-Human CD10 mAb, FITC

Product Data Sheet

PRODUCT INFORMATION

Catalog#/Size : GMH010F-025/25 Tests
GMH010F-100/100 Tests

Clone: CB-CALLA

Isotype: Mouse IgG1

Reactivity: Human

Formulation: Phosphate-buffered solution, pH 7.4, containing 0.09% sodium azide and 0.1% (w/v)

Storage: Store at 4°C. DO NOT FREEZE. LIGHT SENSITIVE

DESCRIPTION

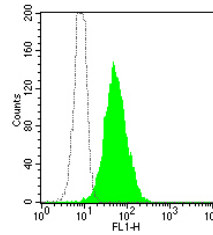
CB-CALLA reacts with CD10, 100 kDa common acute lymphoblastic leukemia antigen (CALLA), which is expressed on lymphoid precursors, germinal center B cells, and peripheral blood granulocytes. CD10 is a regulator of B cell growth and proliferation. CD10 antibody is used in conjunction with other reagents in the phenotyping of leukemia.

CD10 is a phenotyping marker of leukemic cells that may have prognostic significance in leukemia clinical application.

APPLICATION AND USAGE

Applications: FC

Recommended Usage: Each lot of this antibody is quality control tested by immunofluorescent staining with flow cytometric analysis. For immunofluorescent staining, the suggested use of this reagent is 10 µl per million cells or 10 µl per 100 µl of whole blood. It is recommended that the reagent be titrated for optimal performance for each application.



Normal human peripheral blood granulocytes analyzed with FITC CD10 (CB-CALLA) mAb.

RELATED PRODUCTS

Catalog#	Product Name	Applications
GMH010P	Mouse anti-Human CD10, PE	FC
GMH010Z	Mouse anti-Human CD10, Purified	FC
GMK901F	Mouse IgG1 Isotype control, FITC	FC

REFERENCE

- McMichael, AJ. Ceds. (1987) Leucocyte Typing III: White Cell Differentiation Antigen, Oxford University Press, New York.
- Letarte, M. *et al.*, (1988) *J. Exp. Med.* **168**:1247.
- Le Bien TW and McCormack, RT. (1989) *Blood* **73**:625-635.
- Consolini R *et al.* (1998) *Hematologica* **83**:967-973